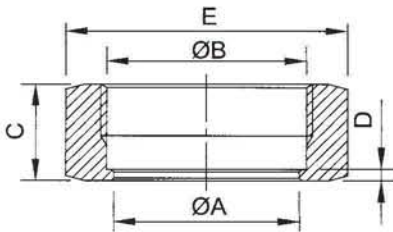
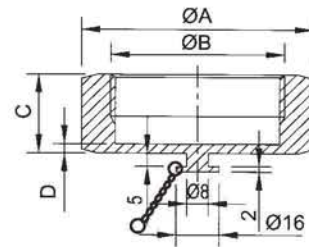


Unit: mm



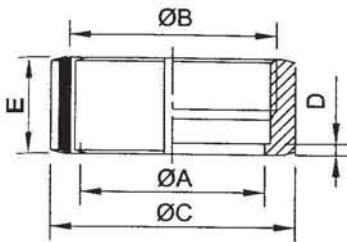
**IDF Hexagonal Nut IDF-13H**

SIZE	A	B	C	D	E
1.0"	30.5	34.34X8T ACME	30	3.5	46
1.5"	43.5	47.86X8T ACME	30	3.5	60
2.0"	57.0	61.37X8T ACME	30	3.5	75
2.5"	70.7	74.88X8T ACME	30	3.5	90
3.0"	83.3	88.40X8T ACME	30	3.5	105
4.0"	112.0	122.05X6T ACME	34.9	4.7	133



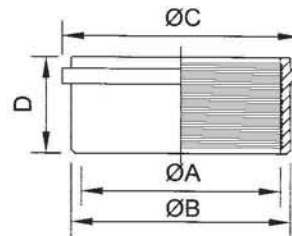
**IDF-Blanks Nut IDF-13HBN**

SIZE	A	B	C	D
1.0"	46	34.34X8T ACME	30	3.5
1.5"	60	47.86X8T ACME	30	3.5
2.0"	75	61.37X8T ACME	30	3.5
2.5"	90	74.88X8T ACME	30	3.5
3.0"	105	88.40X8T ACME	30	3.5
4.0"	133	122.05X6T ACME	34.9	4.7



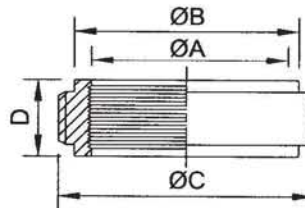
**IDF Round Nut IDF-13R**

SIZE	A	B	C	D	E
1.0"	30.5	34.34X8T ACME	48	3.5	30
1.5"	43.5	47.86X8T ACME	64	3.5	30
2.0"	57.0	61.37X8T ACME	77	3.5	30
2.5"	70.7	74.97X8T ACME	91	3.5	30
3.0"	83.3	88.40X8T ACME	104	3.5	30
4.0"	112.0	115.41X8T ACME	135	4.7	34.9



**IDF-Expanding Liner IDF-14R**

SIZE	A	B	C	D
1.0"	25.5	29.2	33.8	20
1.5"	38.2	42.7	47.0	20
2.0"	50.9	56.2	60.5	25
2.5"	63.6	69.9	74.0	30
3.0"	76.3	82.6	87.5	30
4.0"	101.7	111.1	120.6	30

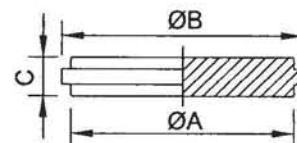
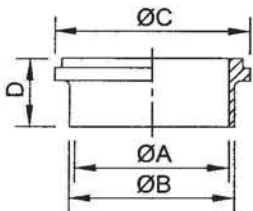


**IDF-Welding Liner IDF-14**

SIZE	A	B	C	D
1.0"	22.1	25.4	33.8	21.5
1.5"	34.8	38.1	47.0	21.5
2.0"	47.5	51.8	60.5	21.5
2.5"	60.2	63.5	74.0	21.5
3.0"	72.9	76.2	87.5	21.5
4.0"	97.6	101.6	120.6	30.0

**IDF Expanding Male IDF-15R**

SIZE	A	B	C	D
1.0"	25.5	29.2	37.13X8T ACME	16.5
1.5"	38.2	42.7	50.65X8T ACME	19.5
2.0"	50.9	56.2	64.16X8T ACME	19.5
2.5"	63.6	69.9	77.67X8T ACME	25.0
3.0"	76.3	82.6	91.19X8T ACME	30.0
4.0"	101.7	111.1	125.9X6T ACME	35.0



**IDF-Welding Male IDF-15**

SIZE	A	B	C	D
1.0"	22.1	25.4	37.13X8T ACME	21.5
1.5"	34.8	38.1	50.65X8T ACME	21.5
2.0"	47.5	51.8	64.16X8T ACME	21.5
2.5"	60.2	63.5	77.67X8T ACME	21.5
3.0"	72.9	76.2	91.19X8T ACME	21.5
4.0"	97.6	101.6	125.9X6T ACME	30.0

**IDF Blanks IDF-16 AMP**

SIZE	A	B	C
1.0"	29.2	33.8	10.5
1.5"	42.7	47.0	10.5
2.0"	56.2	60.5	10.5
2.5"	69.9	74.0	10.5
3.0"	82.6	87.5	10.5
4.0"	111.1	114.1	12.6

