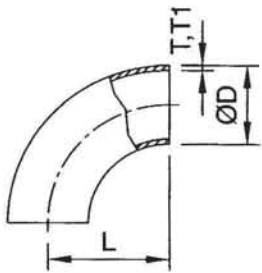


Unit: mm

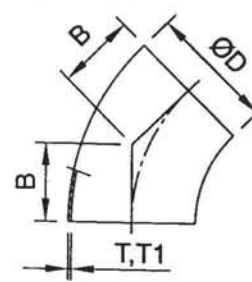
90° Tube Bend



90° Short Tube Bend

SIZE	D	L	T	T1
25	25	37.5	1.25	1.5
38	38	57.0	1.25	1.5
51	51	76.5	1.25	1.5
63.5	63.5	95.25	1.50	1.5
76	76.1	114.15	1.60	2.0
104	104	152.1	2.00	2.0

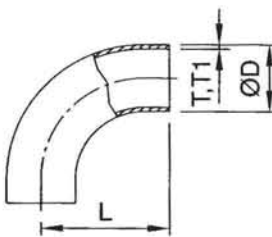
45° Elbow



45° Short Elbow

SIZE	D	B	T	T1
25	25	15.53	1.25	1.5
38	38	23.61	1.25	1.5
51	51	31.69	1.25	1.5
63.5	63.5	39.45	1.50	1.5
76	76.1	47.28	1.60	2.0
104	104	63.0	2.00	2.0

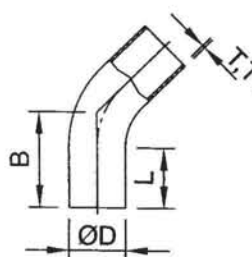
90° Tube Bend



90° Long Tube Bend

SIZE	D	L	T	T1
25	25	52.5	1.25	1.5
38	38	72.0	1.25	1.5
51	51	91.5	1.25	1.5
63.5	63.5	113.25	1.50	1.5
76	76.1	132.15	1.60	2.0
104	104	172.1	2.00	2.0

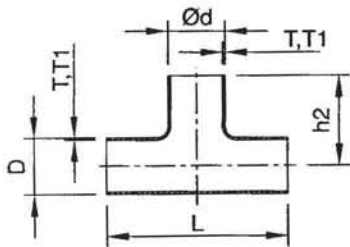
45° Elbow



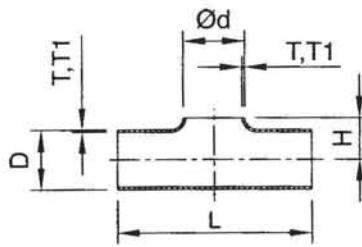
45° Long Elbow

SIZE	D	L	B	T	T1
25	25	27	42.53	1.25	1.5
38	38	33	56.61	1.25	1.5
51	51	37	68.69	1.25	1.5
63.5	63.5	38	78.45	1.50	1.5
76	76.1	38	85.28	1.60	2.0
104	104	40	103.0	2.00	2.0

Tee With Straight-End

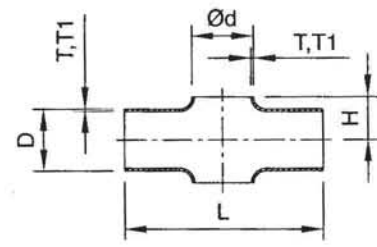


Tee Without Straight-End

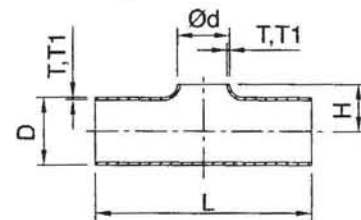


SIZE	øD	T	T1	L	h2	H	ød
25	25	1.25	1.5	110	55	15	25
38	38	1.25	1.5	140	70	21	38
51	51	1.25	1.5	164	81	29	51
63.5	63.5	1.50	1.5	210	105	36	63.5
76.1	76.1	1.60	2.0	220	110	44	76.1
104	104	2.00	2.0	300	150	58	104

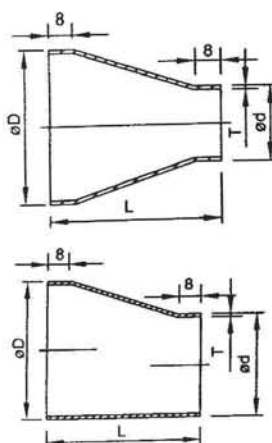
Welding Cross Without Straight-End



Welding Reducing Tee Without Straight-End



SMS Eccentric / Concentric Reducer



SIZE	øD	T	ød	t	L	L1
38x25	38	1.50	25	1.50	39	46
51x25	51	1.50	25	1.50	57	68
51x38	51	1.50	38	1.50	39	47
63.5x25	63.5	1.50	25	1.50	74	92
63.5x38	63.5	1.50	38	1.50	57	70
63.5x51	63.5	1.50	51	1.50	39	44
76x25	76.1	1.65	25	1.50	92	110
76x38	76.1	1.65	38	1.50	74	92
76x51	76.1	1.65	51	1.50	57	68
76x63.5	76.1	1.65	63.5	1.65	39	47
104x51	104	2.00	51	1.50	95	117
104x63.5	104	2.00	63.5	1.50	78	94
104x76.1	104	2.00	76.1	1.60	60	74

SIZE	øD	T	L	H	ød	T1
38x25	38	1.25	140	21	25	1.50
51x25	51	1.25	164	29	25	1.50
51x38	51	1.25	164	29	38	1.50
63.5x25	63.5	1.50	210	36	25	1.50
63.5x38	63.5	1.50	210	36	38	1.50
63.5x51	63.5	1.50	210	36	51	1.50
76.1x25	76.1	1.60	220	44	25	2.00
76.1x38	76.1	1.60	220	44	38	2.00
76.1x51	76.1	1.60	220	44	51	2.00
76.1x63.5	76.1	1.60	220	44	63.5	2.00
104x25	104	2.00	300	58	25	2.00
104x38	104	2.00	300	58	38	2.00
104x51	104	2.00	300	58	51	2.00
104x63.5	104	2.00	300	58	63.5	2.00
104x76.1	104	2.00	300	58	76.1	2.00