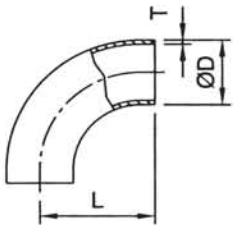


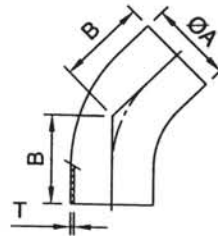
Unit: mm

90° Short Tube Bend



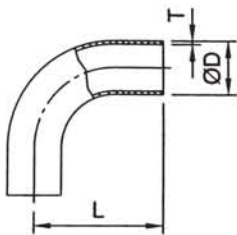
SIZE	D	L	T
1.0"	25.4	43.5	1.65
1.5"	38.1	63.5	1.65
2.0"	50.8	88.5	1.65
2.5"	63.5	113.5	1.65
3.0"	76.2	133.5	1.65
4.0"	101.6	173.5	2.10

45° Long Elbow



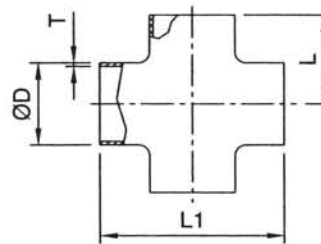
SIZE	A	B	T
1.0"	25.4	30.2	1.65
1.5"	38.1	41.3	1.65
2.0"	50.8	58.7	1.65
2.5"	63.5	76.2	1.65
3.0"	76.2	93.7	1.65
4.0"	101.6	122.2	2.10

90° Long Tube Bend



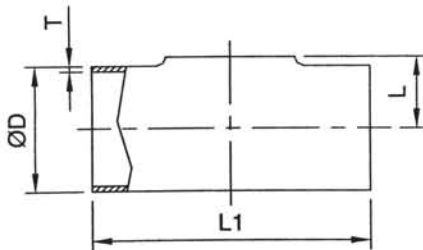
SIZE	D	L	T
1.0"	25.4	65	1.65
1.5"	38.1	85	1.65
2.0"	50.8	110	1.65
2.5"	63.5	135	1.65
3.0"	76.2	155	1.65
4.0"	101.6	195	2.10

Cross



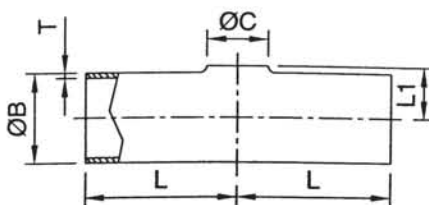
SIZE	D	L	L1	T
1.0"	25.4	65	130	1.65
1.5"	38.1	85	170	1.65
2.0"	50.8	110	220	1.65
2.5"	63.5	135	270	1.65
3.0"	76.2	155	310	1.65
4.0"	101.6	195	390	2.10

Pull Tee



SIZE	D	L	L1	T
1.0"	25.4	14.2	87	1.65
1.5"	38.1	21.6	127	1.65
2.0"	50.8	29.1	177	1.65
2.5"	63.5	35.3	227	1.65
3.0"	76.2	41.4	267	1.65
4.0"	101.6	54.7	347	2.10

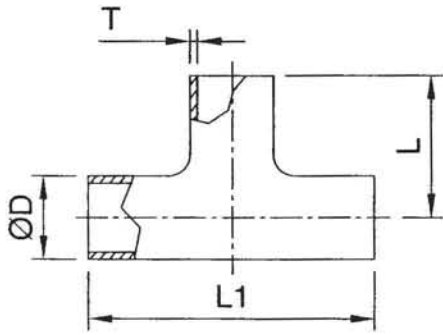
Reducing Tee W/O Straight End



SIZE	B	C	L	L1	T
1.5"x1.0"	38.1	25.4	63.5	22	1.65
2.0"x1.0"	50.8	25.4	88.5	29	1.65
2.0"x1.5"	50.8	38.1	88.5	29	1.65
2.5"x1.0"	63.5	25.4	113.5	35	1.65
2.5"x1.5"	63.5	38.1	113.5	35	1.65
2.5"x2.0"	63.5	50.8	113.5	35	1.65
3.0"x1.0"	76.2	25.4	132	41	1.65
3.0"x1.5"	76.2	38.1	129	41	1.65
3.0"x2.0"	76.2	50.8	122	41	1.65
3.0"x2.5"	76.2	63.5	122	41	1.65
4.0"x2.0"	101.6	50.8	173.5	55	2.10
4.0"x2.5"	101.6	63.5	173.5	55	2.10
4.0"x3.0"	101.6	76.2	173.5	55	2.10

Unit: mm

Welding Tee



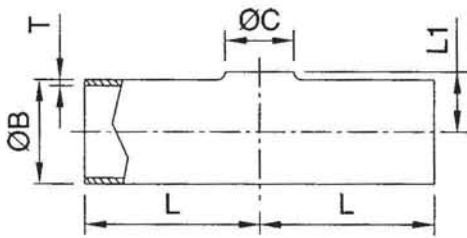
Welding Tee

SIZE	D	L	L1	T
1.0"	25.4	43.5	87	1.65
1.5"	38.1	63.5	127	1.65
2.0"	50.8	88.5	177	1.65
2.5"	63.5	113.5	227	1.65
3.0"	76.2	133.5	267	1.65
4.0"	101.6	173.5	347	2.10

Long Tee

SIZE	D	L	L1	T
1.0"	25.4	65	130	1.65
1.5"	38.1	85	170	1.65
2.0"	50.8	110	220	1.65
2.5"	63.5	135	270	1.65
3.0"	76.2	155	310	1.65
4.0"	101.6	195	390	2.10

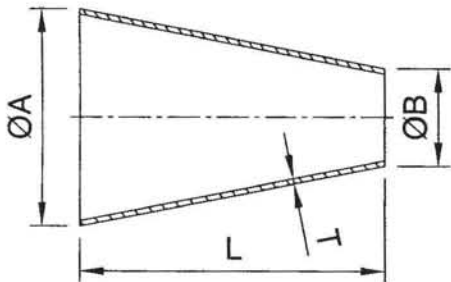
Long Reducing Tee W/O Straight End



SIZE	B	C	L	L1	T
1.5"x1.0"	38.1	25.4	63.5	22	1.65
2.0"x1.0"	50.8	25.4	88.5	29	1.65
2.0"x1.5"	50.8	38.1	88.5	29	1.65
2.5"x1.0"	63.5	25.4	113.5	35	1.65
2.5"x1.5"	63.5	38.1	113.5	35	1.65
2.5"x2.0"	63.5	50.8	113.5	35	1.65
3.0"x1.0"	76.2	25.4	113.5	41	1.65

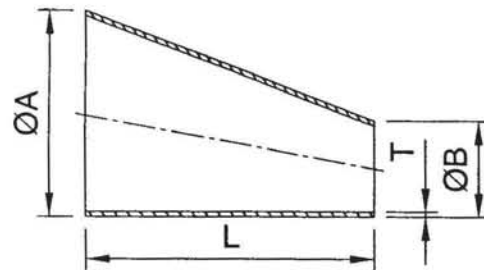
SIZE	B	C	L	L1	T
3.0"x1.5"	76.2	38.1	113.5	41	1.65
3.0"x2.0"	76.2	50.8	113.5	41	1.65
3.0"x2.5"	76.2	63.5	113.5	41	1.65
4.0"x2.0"	101.6	50.8	173.5	55	2.10
4.0"x2.5"	101.6	63.5	173.5	55	2.10
4.0"x3.0"	101.6	76.2	173.5	55	2.10

Concentric Reducer



SIZE	A	B	L	T
1.5"x1.0"	38.1	25.4	29	1.65
2.0"x1.0"	50.8	25.4	53	1.65
2.0"x1.5"	50.8	38.1	41	1.65
2.5"x1.0"	63.5	25.4	82	1.65
2.5"x1.5"	63.5	38.1	64	1.65
2.5"x2.0"	63.5	50.8	40	1.65
3.0"x1.0"	76.2	25.4	110	1.65
3.0"x1.5"	76.2	38.1	81	1.65
3.0"x2.0"	76.2	50.8	55	1.65
3.0"x2.5"	76.2	63.5	41	1.65
4.0"x1.5"	101.6	38.1	135	2.10
4.0"x2.0"	101.6	50.8	106	2.10
4.0"x2.5"	101.6	63.5	76	2.10
4.0"x3.0"	101.6	76.2	53	2.10

Eccentric Reducer



SIZE	A	B	L	T
1.5"x1.0"	38.1	25.4	35	1.65
2.0"x1.0"	50.8	25.4	54	1.65
2.0"x1.5"	50.8	38.1	36	1.65
2.5"x1.0"	63.5	25.4	76	1.65
2.5"x1.5"	63.5	38.1	66	1.65
2.5"x2.0"	63.5	50.8	35	1.65
3.0"x1.0"	76.2	25.4	112	1.65
3.0"x1.5"	76.2	38.1	78	1.65
3.0"x2.0"	76.2	50.8	66	1.65
3.0"x2.5"	76.2	63.5	44	1.65
4.0"x1.5"	101.6	38.1	122	2.10
4.0"x2.0"	101.6	50.8	97	2.10
4.0"x2.5"	101.6	63.5	73	2.10
4.0"x3.0"	101.6	76.2	77	2.10