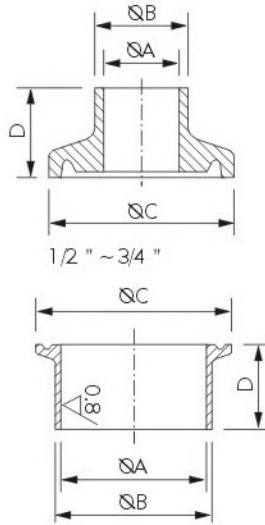


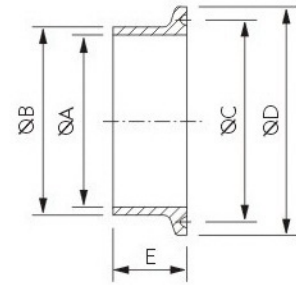
卡箍接头

Ferrule adapter(mm)



3A/SMS-14WMP 14MMP 14AMP

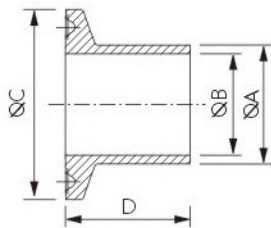
Size	(A)	(B)	(C)	(D)	(E)		
300100	1/2"	945	12.75	25.2	12.7	21.5	286
300101	3/4"	15.75	19.05	25.2	12.7	21.5	286
300102	1.0"	22.2	25.4	50.5	12.7	21.5	286
300103	DN25	22.5	25	50.5	/	21.5	286
300104	1.5"	34.9	38.1	50.5	12.7	21.5	286
300105	DN38	35.5	38	50.5	/	21.5	286
300106	2.0"	47.6	50.8	64.0	12.7	21.5	286
300107	DN51"	48.5	21	64.0	/	21.5	286
300108	2.5"	60.3	63.5	77.5	12.7	21.5	286
300109	DN63.5	60.5	63.5	77.5	/	21.5	286
300110	DN76	72.9	76.1	91.0	/	21.5	286
300111	3.0"	73.0	76.2	91.0	12.7	21.5	286
300112	DN104	97.6	101.6	119.0	/	21.5	286
300113	4.0"	97.6	101.6	119.0	15.8	21.5	286
300114	6.0"	146.8	152.5	166.8	/	21.5	28.6σ38.1
300115	8.0"	197.6	203.3	217.7	/	21.5	28.6σ38.1
300116	10"	247.2	254.1	268.5	/	21.5	28.6σ38.1
300117	12"	298	304.9	319.3	/	21.5	28.6σ38.1



14MPW

Size	(A)	(B)	(C)	(D)	(E)	
300118	1.0"	22.1	29.5	43.5	50.5	20
300119	1.5"	34.8	42.6	43.5	50.5	20
300120	2.0"	47.5	55.7	56.5	64.0	20
300121	2.5"	60.2	68.8	70.5	77.5	20
300122	3.0"	72.9	81.9	83.5	91.0	20
300123	4.0"	97.4	108.1	110.0	119.0	20

ISO 卡箍接头

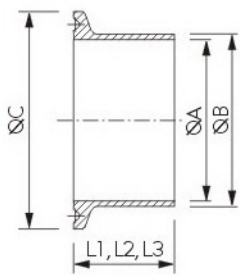


ISO ferrule adapter

DN	(A)	(B)	(C)	(D)	
300200	8	13.5	10.3	34.0	28.6
300201	12	17.5	14.0	34.0	28.6
300202	15	21.6	18.1	34.0	28.6
300203	20	26.9	23.7	50.5	28.6
300204	25	33.7	30.5	50.5	28.6
300205	32	42.4	39.2	50.5	28.6
300206	40	48.3	45.1	64.0	28.6

DN	(A)	(B)	(C)	(D)	
300207	50	60.3	56.3	77.5	28.6
300208	65	76.1	72.1	91.0	28.6
300209	80	88.9	84.9	106.0	28.6
300210	100	114.3	109.1	130.0	28.6
300211	125	139.7	133.7	155.0	28.6
300212	150	168.3	162.3	183.0	28.6
300213	200	219.1	211.1	233.5	28.6

DIN 卡箍接头

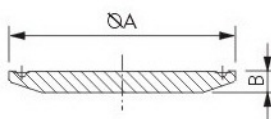


DIN ferrule adapter

Size	(A)	(B)	(C)	(L1)	(L2)	(L3)	
300300	DN10	9	12	34	12.7	21.5	28.6
300301	DN15	15	18	34	12.7	21.5	28.6
300302	DN20	19	22	34	12.7	21.5	28.6
300303	DN28	25	28	50.5	12.7	21.5	28.6
300304	DN34	31	34	50.5	12.7	21.5	28.6
300305	DN40	37	40	50.5	12.7	21.5	28.6
300306	DN52	49	52	64.0	12.7	21.5	28.6

Size	(A)	(B)	(C)	(L1)	(L2)	(L3)	
300307	DN70	66	70	91.0	12.7	21.5	28.6
300308	DN85	81	85	106.0	15.8	21.5	28.6
300309	DN101.6	97.6	101.6	119.0	15.8	21.5	28.6
300310	DN104	100	104	119.0	15.8	21.5	28.6
300311	DN125	125	129	155.0	15.8	21.5	28.6
300312	DN150	150	154	183.0	15.8	21.5	28.6
300313	DN200	200	204	233.5			28.6

快装堵片 DIN -16AMP



Rapid installation plug DIN -16AMP

Size	(A)	(B)	
300400	1/2"	25	6.4
300401	3/4"	25	6.4
300402	1.0"	50.5	6.4
300403	1.5"	50.5	6.4
300404	2.0"	64	6.4
300405	2.5"	77.5	6.4
300406	3.0"	91	6.4
300407	4.0"	119	7.9
300408	10	34	6.4
300409	20	34	6.4
300410	80	106	6.4

Rapid installation plug 3A -16AMP

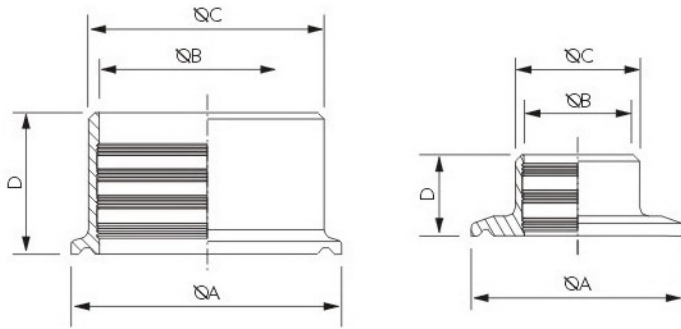
Size	(A)	(B)	
300411	A37	34	6.3
300412	1/2"-3/4"	25.2	5
300413	1"-1.5"	50.5	6.3
300414	2.0"	61.0	6.3
300415	2.5"	77.5	6.3
300416	3.0"	91.0	6.3
300417	4.0"	119.0	7.9
300418	6.0"	166.8	11.1
300419	8.0"	217.7	11.1
300420	10"	268.5	11.1
300421	12"	319.3	11.1

ISO-16AMP

Size	(A)	(B)	
300430	DN20	50.5	6.3
300431	DN25	50.5	6.3
300432	DN32	50.5	6.3
300433	DN40	61.0	6.3
300434	DN50	77.5	6.3
300435	DN65	91	6.3
300436	DN80	106	6.3
300437	DN100	130	7.9
300438	DN125	155	7.9
300439	DN125	183	11.1
300440	DN200	233.5	11.1

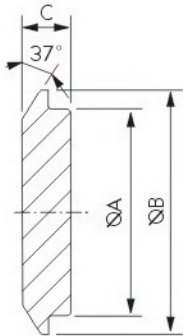
卡箍接头

Ferrule adapter(mm)



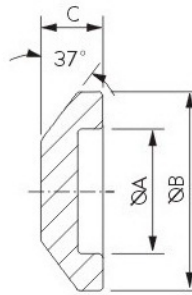
3A-Expanding Ferrule

	SIZE	(A)	(B)	(C)	(D)
300441	1.0"	50.5	25.5	29.5	19.1
300442	1.5"	50.5	38.2	42.6	28.6
300443	2.0"	64	50.9	55.7	33.3
300445	2.5"	77.5	63.6	68.8	34.9
300446	3.0"	91	76.3	91.9	36.5
300447	4.0"	119	101.7	108.1	38.1



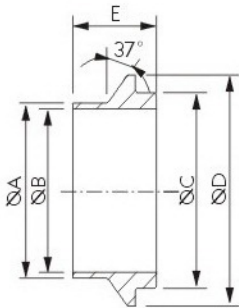
14WI -CAP

	SIZE	(A)	(B)	(C)
300450	1.0"	31.5	50.67	9.7
300451	1.5"	44.2	50.67	9.7
300452	2.0"	56.9	67.05	11.77
300453	2.5"	69.6	84.00	15.52
300454	3.0"	83.82	98.30	16.12
300455	4.0"	109.14	123.70	16.12



15WI -CAP

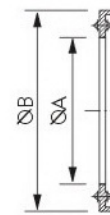
	SIZE	(A)	(B)	(C)
300460	1.0"	31.88	50.67	12.75
300461	1.5"	44.58	50.67	12.75
300462	2.0"	57.28	67.05	17.66
300463	2.5"	69.98	84.00	18.37
300464	3.0"	84.20	98.30	19.39
300465	4.0"	109.60	123.70	19.37



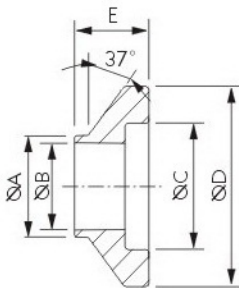
14WI I

	SIZE	(A)	(B)	(C)	(D)	(E)
300470	1.0"	25.65	22.10	31.50	50.67	19.84
300471	1.5"	38.35	34.80	44.20	50.67	23.80
300472	2.0"	51.05	47.50	56.90	67.05	26.19
300473	2.5"	63.75	60.20	69.60	84.00	29.36
300474	3.0"	76.45	72.89	83.82	98.30	30.94
300475	4.0"	101.85	97.38	109.14	123.70	34.11

法兰型 13FG Flange type 13FG



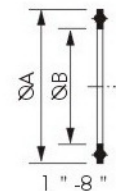
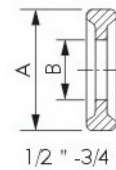
	SIZE	(A)	(B)
300480	1.0"	22.8	52.7
300481	1.5"	35.8	52.7
300482	2.0"	48.8	66.2
300483	2.5"	60.5	79.7
300484	3.0"	73.1	93.2
300485	4.0"	97.8	121.2
300486	6.0"	148	169.1
300487	10"	270.7	249
300488	12"	300	321.5



15WI I

	SIZE	(A)	(B)	(C)	(D)	(E)
300490	1.0"	25.65	22.10	31.88	50.67	19.84
300491	1.5"	38.35	34.80	44.58	50.67	23.80
300492	2.0"	51.05	47.50	57.28	67.05	26.19
300493	2.5"	63.75	60.20	69.98	84.00	29.36
300494	3.0"	76.45	72.89	84.20	98.30	30.94
300495	4.0"	101.85	97.38	109.60	123.70	34.11

普通式 13PG Plain type 13PG



	SIZE	(A)	(B)
300330	1/2"	21.8	9.9
300331	3/4"	21.8	16.3
300332	1.0"	50.0	22.7
300333	1.5"	50.0	35.9
300334	2.0"	63.5	48.6
300335	2.5"	76.2	61.3
300336	3.0"	88.9	74.0
300337	4.0"	118	98.6
300338	6.0"	165	147.8
300339	8.0"	216	196.6

用于卡箍的垫圈:三元乙丙橡胶,硅橡胶,氟橡胶,聚四氟乙烯
Gasket for Ferrule:EPDM,SILICON,VITON,PTFE