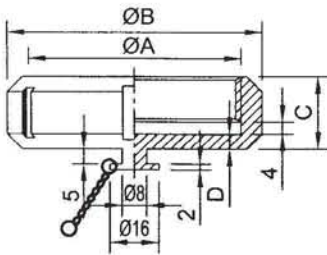
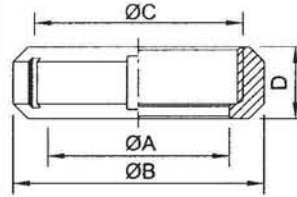


Unit: mm



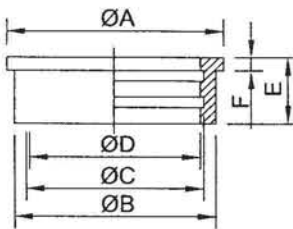
SWS Blank Nut 13RBN

DIN	A	B	C	D
25	RD 40X1/6	51	19	4
32	RD 48X1/6	60	22	4
38	RD 60X1/6	74	23	4
51	RD 70X1/6	84	24	5
63	RD 85X1/6	100	28	5
76	RD 98X1/6	114	30	6
104	RD 125X1/4	138	31	5



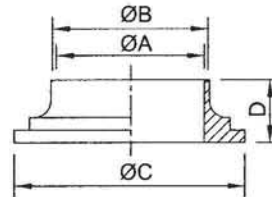
SMS Nut 6 Slots SMS-13R

SIZE	A	B	C	D
25	32.3	51	RD 40X1/6	19
32	40.3	60	RD 48X1/6	22
38	48.5	74	RD 60X1/6	23
51	61.0	84	RD 70X1/6	24
63.5	74.0	100	RD 85X1/6	28
76	87.0	114	RD 98X1/6	30
101.6	113.0	138	RD 125X1/4	31
104	113.0	138	RD 125X1/4	31
104-B	117.0	150	RD 132X1/6	31



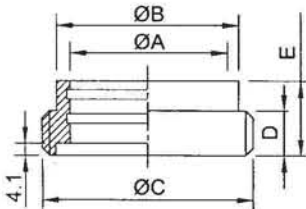
SMS Expanding Liner 14R

SIZE	A	B	C	D	E	F
25	35.5	32.0	25.8	25.2	17	3.5
32	43.5	40.0	33.0	32.2	17	3.5
38	55.0	47.9	38.8	38.2	20	4.0
40	55.0	48.0	41.2	40.2	20	4.0
51	65.0	60.4	51.8	51.2	20	4.0
63	80.0	73.5	64.3	63.7	25	4.0
76	93.0	86.5	77.0	76.2	30	5.0
101.6	118.0	112.5	102.6	101.8	27	6.0
104	118.0	112.5	105.0	104.2	27	6.0



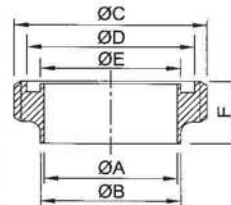
Long Welding Liner SMS-14

DIN	A	B	C	D
25	22.5	25	35.5	15.5
38	35.5	38	55	16.0
51	48.5	51	65	17.0
63	60.5	63.5	80	17.0
76	72.9	76.1	93	19.0
101.6	97.6	101.6	118	19.0
104	100	104	118	19.0
104-B	98.5	102.5	127	19.0



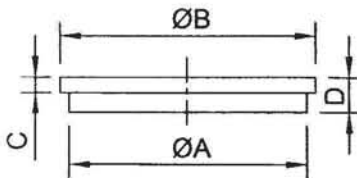
SMS Expanding Male 15R

DIN	A	B	C	D	E
25	25.2	32.0	RD 40X1/6	11	20
32	32.2	40.0	RD 48X1/6	13	20
38	38.2	47.9	RD 60X1/6	15	23
40	40.2	48.0	RD 60X1/6	15	23
51	51.2	60.4	RD 70X1/6	15	25
63	63.7	73.5	RD 85X1/6	19	30
76	76.2	86.5	RD 98X1/6	19	35
101.6	101.8	112.5	RD 125X1/4	20	30
104	104.2	112.5	RD 125X1/4	20	30



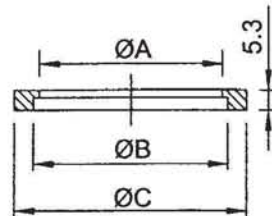
Long Welding Male SMS-15

SIZE	A	B	C	D	E	F
DN25	22.5	25.0	RD 40X1/6	32	24.9	19
DN38	35.5	38.0	RD 60X1/6	84	37.9	23
DN51	48.5	51.0	RD 70X1/6	61	50.9	23
DN63.5	60.5	63.5	RD 85X1/6	73.5	63.4	27
DN76	72.9	76.1	RD 98X1/6	86	75.9	27
DN101.6	97.6	101.6	RD 125X1/4	116	103.9	30
DN104	100.0	104.0	RD 125X1/4	116	103.9	30



SMS Blanks

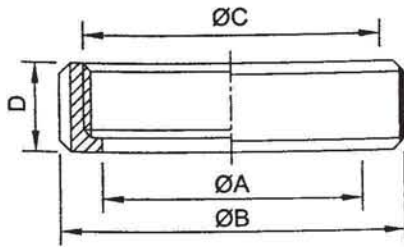
SIZE	A	B	C	D
25	32.0	35.5	3.5	7.5
38	48.0	55.0	5.0	9.0
51	60.0	65.0	5.0	10.0
63	73.5	80.0	5.0	10.0
76	86.0	93.0	5.0	11.0
101.6	112.0	118.0	6.0	11.0
104	112.0	118.0	6.0	11.0



Seal Ring L Type (EPDM, Silicon, Viton)

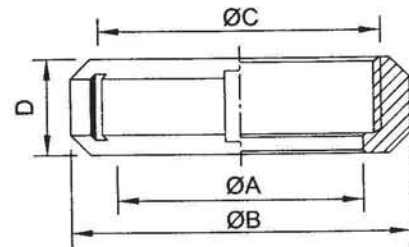
SIZE	A	B	C
25	22.8	25.1	31.8
38	35.8	38.1	47.8
51	48.8	51.1	60.8
63.5	61.0	63.6	73.3
76	73.4	76.1	85.8
104	100.5	104.0	115.7

Unit: mm



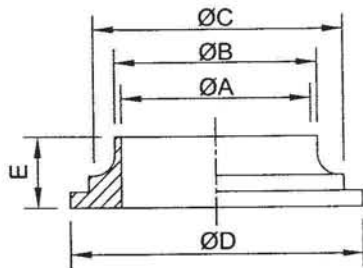
SMS-13BE Nut 4 Slots SMS-13R

SIZE	A	B	C	D
25	32.3	49	RD 40X1/6	17.2
38	48.5	70	RD 60X1/6	22
51	61.0	80	RD 70X1/6	23
63	74.0	96	RD 85X1/6	27
76	87.0	110	RD 98X1/6	28.5
104	113.0	136	RD 125X1/4	31



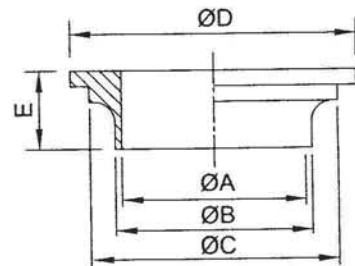
SMS Nut 6 Slots SMS-13R

SIZE	A	B	C	D
25	32.3	51	RD 40X1/6	19
32	40.3	60	RD 48X1/6	22
38	48.5	74	RD 60X1/6	23
51	60.5	84	RD 70X1/6	24
63.5	74.0	100	RD 85X1/6	28
76	87.0	114	RD 98X1/6	30
101.6	113.0	138	RD 125X1/4	31
104	113.0	138	RD 125X1/4	31



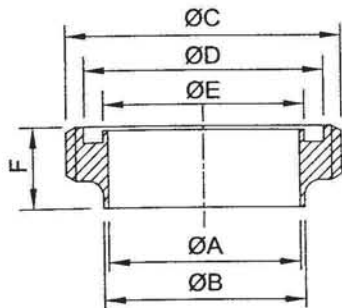
SMS-14BE Welding Liner SMS-14S

SIZE	A	B	C	D	E
25	22.5	25	32	35.5	10
38	35.5	38	47.9	55	11
51	48.5	51	60.4	65	13
63	60.5	63.5	73.5	80	13
76	72.9	76.1	86.5	93	14
104	100	104	112.5	118	16



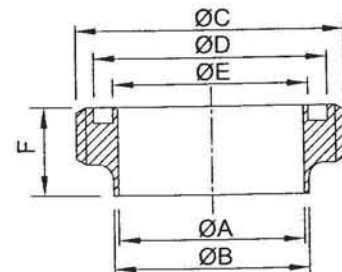
CL-Style Welding Liner SWS-14G

SIZE	A	B	C	D	E
25	22.5	25	31.7	35.5	15
38	35.5	38	47.7	55	20
51	48.5	51	59.65	65	20
63.5	60.5	63.5	73.1	80	24
76	72.9	76.1	85.6	93	24
101.6	97.6	101.6	111.6	118	30
104	100	104	111.6	118	30



SMS-15BE Welding Male SMS-15S

SIZE	A	B	C	D	E	F
25	22.5	25.0	RD 40X1/6	32	25	15
38	35.5	38.0	RD 60X1/6	48	38	20
51	48.5	51.0	RD 70X1/6	61	51	20
63	60.5	63.5	RD 85X1/6	73.5	63.5	24
76	72.9	76.1	RD 98X1/6	86	76.1	24
104	100	104.0	RD 125X1/4	116	104	27



CL-Style Welding Male SMS-15G

SIZE	A	B	C	D	E	F
25	22.5	25.0	RD 40X1/6	32	24.9	19
38	35.5	38.0	RD 60X1/6	48	37.9	23
51	48.5	51.0	RD 70X1/6	61	50.9	32
63.5	60.5	63.5	RD 85X1/6	73.5	63.4	27
76	72.9	76.1	RD 98X1/6	86	75.9	27
101.6	97.6	101.6	RD 125X1/4	116	103.9	30
104	100	104.0	RD 125X1/4	116	103.9	30